

Envirolak



Water Based Wood Coatings

www.envirolak.com

Designed by professionals, for professionals

Envirolak produces and delivers the highest quality water based products available in the market. Designed to outperform conventional solvent based products with sustainable and user-friendly alternatives, our stains, primers, pigmented and clear topcoats are the eco-friendly solutions you need.



TOP COATS

100 Envirothane Warm Clear Self-Seal Topcoat



EL100XX series is a warm clear urethane topcoat which is also tintable for dark colours. It provides a lasting, durable finish for wooden surfaces that meets or exceeds KCMA standards as a 1k product. The product can also be catalyzed with CAT100-LV hardener (6 hr pot life) or cross-linked with CAT150 cross-linker to improve chemical, scratch, mar resistance and vertical flow. This product combines outstanding toughness and stain resistance with the wood warmth and hand-feel of traditional solvent-based coatings, all in a low VOC water-based finish.

This product is designed for interior wood finishing applications such as tables, cabinetry, furniture, flooring, and millwork.

125 Envirothane Low-Slip Clear Self-Seal Topcoat



EL125XX series is a warm clear urethane topcoat that provides a low-slip, durable finish for wood floors and stairs. This product offers outstanding durability and stain resistance with the wood warmth of traditional solvent-based coatings, all in a low VOC water based finish that can readily be applied in the shop or on-site. The product can also be catalyzed with CAT100-LV hardener or cross-linked with CAT150 cross-linker to improve chemical, scratch, mar resistance and vertical flow.

This product is specially designed for interior wood flooring and stairs. It can be sprayed, brushed, or rolled on and is easy to touch up.

200 Envirothane White Topcoat



ELNYW200XX series is a white urethane topcoat that looks and feels like conventional varnish but offers greater flexibility without harmful solvents. This product can be tinted to any off white or pastel colour, the coating is high build and suitable for tough environments like kitchens and baths when used as a 1K product and can also be catalyzed with CAT100-LV hardener to improve adhesion, vertical flow, chemical and mar resistance or cross-linked with CAT150 cross-linker to improve vertical flow, chemical and mar resistance. This product also has excellent levelling and anti-sag properties for vertical applications.

This product is designed for interior wood finishing applications such as cabinetry, tables, furniture, and millwork.

300 Envirothane Crystal Clear Topcoat



ELNYC300XX series is a water-white clear urethane topcoat that is easy to apply, ultra-clear and intended for use over white basecoats in a glazed system or in clear systems where maximum clarity is desired over light or dark stains. The finished product offers an incredibly smooth and durable finish that is resistant to staining and marking. ELNYC300XX meets or exceeds KCMA standards when used 1K and can also be catalyzed with CAT100-LV hardener to improve adhesion, vertical flow, chemical and mar resistance or cross-linked with CAT150 cross-linker to improve vertical flow, chemical and mar resistance.

This product is designed for interior wood finishing applications such as cabinetry, tables, furniture, and millwork.

400 Envirocryn White Topcoat



ELACW400XX series is a white acrylic topcoat that is easy to spray at low pressures, is fast drying and offers good feel and passes KCMA requirements. This product can be tinted to any off white or pastel colour, has high build, great hiding with one coat coverage of 320/400 grit sanding scratches or previously painted surfaces. This coating is suitable for tough environments like kitchens and baths when used as a 1K product and can also be crosslinked with CAT150 crosslinker to improve vertical flow, chemical and mar resistance. This product also has excellent levelling and anti-sag properties for vertical applications and helps prevent bridging.

This Product is designed for interior wood finishing applications such as cabinetry, furniture and millwork.

450 Envirocryn White Topcoat



ELACW450XX series is a white acrylic topcoat that is designed for mass production, its very economical has a smooth waxy feel and passes KCMA requirements, it loves heat, can be force cured and dries very fast. It is also suitable for the simplest application including brush and rolling. It is very easy to spray without reduction, has exceptional block resistance in as little as 2 hours in simple air dry conditions and in minutes when using heat to speed up the drying process. This product can be tinted to any light off white or pastel colour, has high build and great hiding with one coat coverage. This coating is suitable for tough environments like kitchens and baths when used as a 1K product and can also be crosslinked with CAT150 crosslinker to improve chemical and mar resistance. This product has excellent levelling and anti-sag properties for vertical applications and dries very fast eliminating bridging issues.

This Product is designed for interior wood finishing applications such as cabinetry, furniture and millwork.

500 Envirocryn Crystal Clear Acrylic Urethane Self Seal Topcoat



ELAC500XX series is a water white clear acrylic urethane topcoat which is also tint able for dark colours and is designed for mass production. Its very economical, can be used as a self seal, has a smooth waxy feel and passes KCMA requirements. It loves heat, can be force cured and dries very fast. It is very easy to spray without reduction, has exceptional block resistance in as little as 2 hours in simple air dry conditions and in minutes when using heat to speed up the drying process. This coating is suitable for tough environments like kitchens and baths when used as a 1K product and can also be catalyzed with CAT100-LV hardener (5 hr pot life) to improve adhesion, chemical and mar resistance or crosslinked with CAT150 crosslinker to improve chemical and mar resistance.

This product is designed for interior wood finishing applications such as tables, cabinetry, furniture, flooring, and millwork.

510 Envirocryl Deep Tint Base Topcoat



ELAN510XX series is an acrylic urethane deep tint base topcoat that is easy to spray at low pressures, is fast drying and offers a waxy feel and passes KCMA requirements. This product can be tinted to any dark colour, has high build for great hiding with one coat coverage of 320 grit sanding scratches or previously painted surfaces. It is suitable for tough environments like kitchens and baths when used as a 1K product and can also be catalyzed with CAT100-LV hardener (4 hr pot life) to improve adhesion, chemical and mar resistance or crosslinked with CAT150 crosslinker to improve vertical flow, chemical and mar resistance. This product also has excellent levelling and anti-sag properties for vertical applications.

This product is designed for interior wood finishing applications such as cabinetry, furniture and millwork.

700 Envirocure Clear UV Topcoat



ELUV700XX Series is a water white clear UV cured self seal clearcoat for use in mass production industrial settings. It passes KCMA requirements and the most demanding requirements. It loves heat, can be force cured without flash off and dries very fast. It is very easy to spray without reduction, Once the finish is cured under UV lights it is incredibly durable, scratch resistant, stain and chemical resistant and is ready to be packed and shipped immediately.

This product is designed for interior wood finishing applications such as tables, cabinetry, furniture, flooring, and millwork.

800 Envirothane White Topcoat



ELNYW800XX Series is a white acrylic urethane hybrid topcoat that looks and feels outstanding and offers excellent stain resistance and anti-burnishing properties. It is easy to spray at low pressures and dries fast with exceptional coverage and high build. The 800 series meets KCMA standards and is suitable for tough environments like kitchens and bathrooms. It offers excellent levelling and anti-sag properties for vertical applications, excellent adhesion to most substrates and can be applied over our PRT9000 primer in 1-2 hours in simple air-dry conditions. This product is not recommended for use with isocyanate hardeners but can be cross-linked with CAT150 Crosslinker at 3% for improved chemical and mar resistance. When using CAT150 there will be an increase in viscosity overnight, but the product remains easy to spray; mix 1:1 with fresh (uncatalyzed) material and add an additional 3% CAT150 to return product to its original viscosity.

This product is designed for interior wood finishing applications such as cabinetry, furniture and millwork.

900 Envirothane Raw Clear Natural Effect Zero Sheen



AVAILABLE SHEEN

ELNYC900 00 Raw is a clear urethane topcoat that can be used to achieve the look of raw, unfinished wood, while adding the protection of a high quality wood finish. The product is easy to spray through all types of spray equipment and is capable of achieving gloss values less than 1 when applied to wood substrates. Despite being an “ultra-low” sheen product the 900 00 Raw offers outstanding mar resistance and doesn’t “wet” (darken) the wood substrate, leaving a very natural looking finish. For best performance on cabinetry or furniture it is recommended to add 3% CAT150 Crosslinker or 3-10% CAT100-LV Hardener (12 hr pot life) (note that adding CAT100LV will give some “wood wetting” and raise the gloss to 2 sheen). ELNYC900 00 can also be tinted to any dark colour for the ultimate 0.5-2 sheen dark colour system with self healing anti scratch and non marring properties. For decorative applications such as ceiling panels ELNYC900 00 can be used as a one component finish.

This product is designed for interior wood finishing applications such as cabinetry, furniture and millwork.

BASE COATS



500 Envirocryl High Build Universal Clear Sealer

ELSEAL500 series is a water white clear acrylic urethane high build sealer for mass productions under all Envirolak topcoats. It prevents fiber raise and sands exceptionally well fast with excellent clarity. It has the properties of an Isolator that sticks to almost everything and everything sticks to it. It is very easy to spray without reduction, has exceptional block resistance in as little as 2 hours in simple air dry conditions and in minutes when using heat to speed up the drying process. This coating is suitable for tough environments like kitchens and baths when used as a 1K product and can also be catalyzed with CAT100-LV hardener (6 hr pot life) to improve adhesion and chemical resistance or crosslinked with CAT150 crosslinker to improve chemical resistance. It passes KCMA requirements when used in conjunction with Envirolak topcoats.

This product is designed for interior wood finishing applications such as cabinetry, tables, furniture and millwork.

PRIMERS



160-TB Envirocryl Tannin Blocking White Primer

ELPR160-TB is a 1K universal production primer for mass production with excellent tannin blocking properties that provides an excellent foundation for any solid colour systems on solid wood, veneer, MDF or for refinishing also as a 1K product. Its very economical and offers fast dry times with minimal chances of bridging and is easy to sand. It is very easy to spray without reduction, has exceptional block resistance in as little as 2 hours in simple air dry conditions and in minutes when using heat to speed up the drying process. This product can be tinted to any light off white or pastel colour, has high build and great hiding with one coat coverage. PR160-TB is suitable to be topcoated with Envirolak's 200, 300, 400, 450, 500, 510, 800 or 900 series and many other topcoats. Do not use 100 series over PR160-TB.

This product is designed for interior wood finishing applications such as cabinetry, tables, furniture and millwork.

170 Envirothane White Primer High Solids

ELPR170 is a universal urethane primer that provides an excellent foundation for any solid colour systems on MDF as either a 1K or 2K product. When using PR170 on veneer, solid wood or in a refinish situation it is necessary to use the product as a 2K system by adding CAT100-LV Hardener to improve adhesion and prevent cracking or checking of veneers and soft woods. This 70% solids high-hide primer lays down very flat and provides unsurpassed filling properties especially for MDF, where it does not swell the fibers like other water based products in the market. It offers fast dry times and is easy to sand without being easy to sand through.

This product is designed for interior wood finishing applications such as cabinetry, tables, furniture and millwork.

170-TB Envirothane Tannin Blocking White Primer

ELPR170-TB is a universal urethane primer that provides an excellent foundation for any solid colour systems on MDF as either a 1K or 2K product. When using PR170-TB on veneer, solid wood or in a refinish situation it is necessary to use the product as a 2K system by adding CAT100-LV Hardener to improve adhesion and prevent cracking or checking of veneers and soft woods. This 70% solids high-hide primer lays down very flat and provides unsurpassed filling properties especially for MDF, where it does not swell the fibers like other water based products in the market. It offers fast dry times and is easy to sand without being easy to sand through. ELPR170-TB offers all the same properties as our ELPR170 with the addition of a tannin blocking additive.

This product is designed for interior wood finishing applications such as cabinetry, tables, furniture and millwork.

180 Envirothane Neutral Primer High Solids

ELPR180 is the neutral version of our high performance PR170 white primer that provides an excellent foundation for any dark solid colour systems on MDF as either a 1K or 2K product. This product is designed to be tinted to any dark colour including black. It has 66% solids with good hiding when tinted and offers outstanding fill characteristics in an easy to sand, VOC friendly water-based primer. When using PR180 on veneer, solid wood or in a refinish situation it is necessary to use the product as a 2K system by adding ELCAT100-LV Hardener to improve adhesion and prevent cracking or checking in veneers and softwoods.

This product is designed for interior wood finishing applications such as cabinetry, tables, furniture and millwork.

T9000 Envirocryl Universal Stain & Tannin Blocking Primer

ELPRT9000 is a specially designed 1K universal primer designed for refinishing and new construction. It offers industry leading stain, dye and tannin blocking in an easy to use, one-component economical water-based primer that loves heat and can be force dried very fast. The new 2026 formula has higher build, better adhesion, better moisture resistance is easy to sand and can be used under all Envirolak top coats including our 100 series. It has excellent adhesion to a variety of existing coatings (solvent or water based) as well as veneers, solid wood, MDF, plastics, concrete and stone. This product can be tinted with T900BT black tinter to make it dark grey in colour.

This product is designed for interior and exterior wood finishing applications such as cabinetry, tables, furniture, millwork, stone and concrete.

T9000BT Colourant Black PRT9000 Black Tinter

T9000BT is a pigment that can be added to T9000 at up to 5% to make a dark grey primer for dark colour systems.



Compatibility Chart

Primers / Sealers						
TOP COATS or BASE COATS	PR160TB (White / Tint)	PR170 / 170TB (White / Tint)	PR180 (Neutral / Tint)	ORIGINAL PRT9000	NEW 2026 PRT9000	SEAL500
100 Series (Clear / Tint Base)	NO	1K / 2K / CL	1K / 2K / CL	NO	1K / 2K	1K / 2K / CL
125 Series (Clear / Tint Base)	NO	1K / 2K / CL	1K / 2K / CL	NO	1K / 2K	1K / 2K / CL
200 Series (White / Tint Base)	1K / 2K / CL	1K / 2K / CL	1K / 2K / CL	2K Only	1K / 2K / CL	1K / 2K / CL
300 Series (Clear Only)	1K / 2K / CL	1K / 2K / CL	1K / 2K / CL	NO	1K / 2K / CL	2K Only
400 Series (White / Tint Base)	1K / CL	1K / CL	1K / CL	1K / CL	1K / CL	1K / CL
450 Series (White / Tint Base)	1K / CL	1K / CL	1K / CL	1K / CL	1K / CL	1K / CL
500 Series	1K / 2K / CL	1K / 2K / CL	1K / 2K / CL	1K / 2K / CL	1K / 2K / CL	1K / 2K / CL
510 Series (Dark Tint Base)	1K / 2K / CL	1K / 2K / CL	1K / 2K / CL	1K / 2K / CL	1K / 2K / CL	1K / 2K / CL
800 Series (White / Tint Base)	1K / CL	1K / CL	1K / CL	1K / CL	1K / CL	1K / CL
160TB Series	1K	1K	1K	1K	NO	NO
170/170TB Series	2K	1K / 2K / CL	1K / 2K / CL	2K / CL	2K	2K
PR180 Series	2K	1K / 2K / CL	1K / 2K / CL	1K / 2K / CL	2K	2K
T9000 Series	1K	1K	1K	1K	1K	1K

Key

1K – 1 Component
2K – 2 Components (CAT100-LV)

CL – Crosslinked (CAT150)
NO – Not Compatible
TB – Tannin Blocking



WOOD STAINS & GLAZES

BWS Envirostain Binder for Wiping Stain

ELBWS is a specially formulated water based wiping stain binder that provides deep, rich colours for a variety of wood substrates. The stain can be sprayed or wiped on and has excellent “dwell time” to minimize lap lines. ELBWS offers minimum grain raising with maximum beauty and ease of use. This binder is typically combined with water and other Envirostain binders to create specific looks.

BSS Envirostain Binder for Spray Stain/Pore Marking

ELBSS can be used on its own with water to create a spray stain that provides a solvent spray stain look with high pore marking. It is also used typically in combination with ELBWS to create contrast and enhance grain colouring in wiping stains.

BDS Envirostain Binder for Dip Stain

ELBDS is a water based dipping stain binder used in combination with water to make dipping stains that provide even tones in an easy to apply format over a variety of wood substrates. ELBDS offers minimum grain raising in a VOC friendly environment. This stain is well suited to fast paced production environments where complex shapes are being finished

BDG Envirostain Binder for Dry Glaze

ELBDG is the primary binder for making dry and wet glazes, it can also be added to wiping stains to decrease pore marking and increase uniformity.

BRC Envirostain Binder for Glaze Adhesion/Roll Coat

ELBRC is the sole binder for machine roll coat applications and is added to wet and dry glazes in small quantities to improve adhesion.

Envirostain Uniforming Stains

ES301 Envirostain Uniforming White Wiping Stain

ES325 Envirostain Uniforming Antique Walnut Wiping Stain

ES375 Envirostain Uniforming Walnut Wiping Stain

Uniforming stains are designed to minimize flipping, contrast and blotching and the differences of colour penetration in different types of wood, they provide very even colour even when you are staining soft and hardwood and desire a similar colour regardless of different undertones in the wood itself. ES301, ES325, ES375, water and Envirostain MicroTints can be combined to create thousands of colours in the uniforming stain technology.

SSB100 Envirostain Base Spray Stain

ELSSB100 is a water based spray stain that provides even tones in an easy to apply format over a variety of wood substrates. ELSSB100 offers minimum grain raising in a VOC friendly environment. This spray stain is well suited to fast paced production environments where colour reproducibility is key.

SWB104 Envirostain Base Wiping Stain

ELSWB104 is a pre blended mix of BWS + BSS + Water making it a ready use wiping stain base that provides deep, rich colours for a variety of wood substrates. The stain can be sprayed or wiped on and has excellent “dwell time” to minimize lap lines. Just add our Micronized Pigments and or ELTINT’s to reach the desired Colour. ELSWB104 offers minimum grain raising with maximum beauty and ease of use.

DGB100 Envirostain Base Dry Glaze Neutral

ELDGB100 is a water based dry glaze used for cerused wood finishes, highlighting profiles, deep grain or distress marks in a finish system. A wide variety of ‘looks’ are achievable depending on how this product is used. Dry glaze may also be referred to as “breakaway glaze” or “pickling dust” or “patina”.

ELSE Envirostain Stain Extender

ELSE is a very slow evaporating product that can be added to Envirolak stains in order to extend the working time with wiping stains for large or complex pieces. Addition of 3-5% of ELRX115 Stain Extender allows for a much longer “open time” for a stain, remaining wet on the wood longer, minimizing lap lines and allowing you to work the stain evenly across a large surface. Adding stain extender will also eliminate ticking or black dots typically seen with water based wiping stains.

ELTINT Series Micronized Pigments

The **ELTINT Series** are concentrated solutions of micronized pigments suitable for the preparation of water-based stains and glazes (patinas) for wood finishing. ELTINT products are only soluble in water and suitable water-based binding agents. They contain binders with a wide range of compatibility suitable for inclusion in a variety of water-based stains. They can be mixed together in all proportions; you can obtain high concentration stains with high vibrance and uniformity. The ELTINTs are compatible with water-based or universal dyes to obtain an even wider range of shades and colour effects. ELTINTs are not meant to be used on their own. They must be diluted and/or mixed with binders and water before their use, depending on their application and the desired effect.

ELTINT01 Envirostain MicroTint 01 White

ELTINT06 Envirostain MicroTint 06 Black

ELTINT03 Envirostain MicroTint 03 Yellow

ELTINT08 Envirostain MicroTint 08 Red

ELTINT04 Envirostain MicroTint 04 Blue

ELTINTGE Envirostain Gilsonite Effect

ELTINTGE is a waterborne version of Gilsonite for highlighting wood grain to be used in addition to our 5 micronized pigments. Gilsonite has been used for years in solvent borne wood stains to accentuate the open grain and help it to “pop”, we now offer a revolutionary waterborne version to help you manipulate the look of our stains. Adding Gilsonite Effect to our wiping and spray stains will help you achieve colour penetration in open pores, eliminate silver or white grains on species like oak while increasing contrast and “pop”.

896 Series Of Pigments

The **896 series** of pigments is our high-performance water based colourants for creating solid colours and can also be used in stains. We suggest a maximum tint load of 6% in our white bases and min 5% max 10% in our clear bases for dark colours.

High tint loads will reduce viscosity of our base materials and may require the addition of ELADD001 thickener to restore viscosity. This line is used in volumetric and gravimetric dispersers. Tint strength, colour difference, and viscosity are controlled to ensure optimal performance in most dispensers. Because the quality of the colourants is tightly controlled, they can also be used for in-plant tinting applications.

They have minimal impact on gloss, dry time, water resistance, hardness, corrosion, foaming or other coating properties.

8960001 Colourant Titanium White Chroma-Chem WB

8960401 Colourant Quinacridone Red Chroma-Chem WB

8960901 Colourant Lead Free Orange Chroma-Chem WB

8961001 Colourant Red Iron Oxide Chroma-Chem WB

8961301 Colourant Burnt Umber Chroma-Chem WB

8961801 Colourant Yellow Iron Oxide Chroma-Chem WB

8962555 Colourant Medium Yellow Chroma-Chem WB

8962601 Colourant Organic Yellow G.S. Chroma-Chem WB

8965501 Colourant Phthalo Green Chroma-Chem WB

8967201 Colourant Phthalo Blue Chroma-Chem WB

8969401 Colourant Quinacridone Violet Chroma-Chem WB

8969901 Colourant Lamp Black Chroma-Chem WB

Envirostain Universal Dyes

Very little matches the vibrance of a dye stain. Dyes penetrate and colour the wood fibres giving 'life' to the colour that is different than a pigment based stain. Many of our original stain colours are based entirely on dyes for this reason. The Envirostain system of ELTINT, ES3XX and EL Binders is further enhanced by compatibility with universal dyes, the ELDYE series. Recommended usage levels vary, but generally should remain below 3-5% by weight of the final formula. These universal dyes are glycol based and have industry leading light-fastness for dyes. They are suitable for use in all Envirolak water based stains and alcohol or acetone solvent stain bases.

ELDYE02 Envirostain Universal Dye 02 Orange

ELDYE03 Envirostain Universal Dye 03 Yellow

ELDYE04 Envirostain Universal Dye 04 Blue

ELDYE05 Envirostain Universal Dye 05 Brown

ELDYE06 Envirostain Universal Dye 06 Black

ELDYE07 Envirostain Universal Dye 07 Bordeaux

ELDYE08 Envirostain Universal Dye 08 Red

Toners

PMCM12841 EnviroTone Espresso

PMCM12842 EnviroTone Gunstock Walnut

PMCM12843 EnviroTone Bordeaux

PMCM12844 EnviroTone Weathered Grey

PMCM12845 EnviroTone Golden Oak

Special FX Metallics and Pearls

EnviroFX Silver

EnviroFX Copper

EnviroFX Bronze

EnviroFX Flash Pearl

EnviroFX Gold



CATALYSTS & ADDITIVES

CAT100-LV EnviroCat Low Viscosity Hardener



ELCAT100-LV is an isocyanate based hardener with ultra low monomeric di-isocyanate content for water based finishes to improve hardness, chemical resistance and adhesion. Using this hardener in the 200 series topcoat will increase the gloss of the product 5-10% depending on how much hardener you add. Using Hardener in any waterborne coating gives a pot-life of several hours after which the coating will begin to gel.

This product is designed to be added to existing Envirolak products to enhance the performance of the cured finish. In topcoats, it will improve hardness, mar and scratch resistance as well as chemical resistance. Using it in basecoats will improve adhesion and water resistance as well as preventing veneers and softwood from checking or cracking.

CAT150 EnviroCat Cross-linker



ELCAT150 is a cross-linker for water based finishes to improve hardness, chemical, scratch, mar resistance in all Envirolak top coats. There is a 10-hour effective period once added to topcoats, unused product will not gel and can be re cross-linked and reused at a later date.

In vertical spray applications, the addition of CAT150 Cross-linker will help eliminate orange peel to give a smoother finish.

ADD 001 WB Thickener

ELADD 001 is a low-medium shear thickener designed to be post-added to Envirolak coatings to increase the viscosity. This can be used to improve sag resistance for vertical spray applications. Add to an existing Envirolak finish to increase application viscosity. Also use ELADD 001 in clearcoats that have been tinted to dark colours to maintain the initial viscosity of the product for consistent application.

ADD 002 WB Flow Additive Solution

ELADD002 is a pre-mixed solution of a silicone flow additive that will reduce the surface tension of Envirolak coatings. ELADD002 can be used to improve substrate wetting on difficult surfaces, it will also improve the “leveling” of the finish. It can help eliminate fisheyes that are caused by surface contamination as well. It should have no impact on foam stabilization or intercoat adhesion.

ELADD 003 UV Absorber

ELADD003 is a liquid UV light absorber for Envirolak coatings. UV Absorber should be added when you want to maintain the colour of natural or lightly stained woods underneath a clearcoat. Except for the 100 series, our resin systems are non-yellowing, but the addition of UV Absorber will help protect the underlying wood substrate. Do not use UV absorber in the 100 series, it will impair curing and drying.

ELADD 004 Tannin Blocking Additive

ELADD004 is a tannin blocking additive for Envirolak coatings. Tannin Blocker can be added to ELPR170 (or other Envirolak finishes) to prevent tannin migration and discolouration over tannin rich wood species (southern red oak, mahogany, redwoods, etc.). The additive will chemically “trap” the tannin in the first layer, preventing the stain from bleeding into subsequent layers of coating. For woods with a lot of tannin bleed two coats will be required. For best results allow each coat to dry for several hours before applying the next coat.

ELADD 005 WB Defoamer Solution

ELADD 005 is a solution of foam destroying polymers that can be post-added to Envirolak coatings when trapped air or foam become an issue during application. Defoamer Solution is used to minimize trapped air, microfoam and macrofoam in spray applied waterborne finishes.

ELADD 006 Fisheye Eliminator Solution

ELADD006 is a pre-mixed solution of a silicone flow additive that helps eliminate surface defects such as fisheyes caused by contamination. ELADD006 is used to get rid of fisheyes and craters, especially those caused by contamination in the paint or air supply. This product will improve surface slip and help the “leveling” of the finish.

RX010 WB Reducer

ELRX010 is a reducer designed for use with any Envirolak topcoat or sealer. This product is designed to quickly reduce the viscosity of water based coatings. This reducer will cut viscosity 3x more than water, allowing for higher build and better hiding vs water alone. Adding 5% to PR170 primer in machine spray applications will help minimize orange peel and improve edge coverage.



RX114 WB Retarder

ELRX 114 is a very slow evaporating reducer designed for use with Envirolak's Envirothane products. This product is designed to slow the evaporation of coatings, it can be added to the Envirothane (Urethane) primers and top coats to help minimize mud-cracking or to allow a film to remain open longer to release trapped air generated by the spraying process. The most common application is adding 1% to PR170 or PR170TB primer in reciprocating machine spray applications to help minimize tip-clogging and improve edge coverage and flow.

RX110 ENVIROKLEAN All-Purpose Water-Based Cleaner

ELRX110 is a powerful and economical water based cleaning solution for industrial coatings. This product is designed for cleaning belts on automated spray units, flushing pumps and fluid lines, as well as spray gun parts, mixing blades, hoses, spray booths, other metal surfaces or anything else that has paint on it. Works very well in ultrasonic cleaning machines, do not leave painted items (guns/parts) submerged for more than 20 minutes or you risk damaging the finish. RX110 mixed 4:1 with water makes an excellent degreaser for cleaning cabinets prior to refinishing.

RX110-C ENVIROKLEAN Concentrate (3:7)

ELRX110-C is a concentrated version of our EnviroKlean Water Based Cleaner that is packaged as an easy-to-use concentrate for economical and environmental shipping. This product, once diluted, is RX110 and is designed for cleaning belts on automated spray units, flushing pumps and fluid lines, as well as spray gun parts, mixing blades, hoses, spray booths, other metal surfaces or anything else that has paint on it.

Works very well in ultrasonic cleaning machines, do not leave painted items (guns/parts) submerged for more than 20 minutes or you risk damaging the finish.

RX111 ENVIROKLEAN "No-Drip" Cleaner

ELRX111 is a thixotropic version of our EnviroKlean Water Based Cleaner that can be sprayed or applied by brush to flat, vertical, or even the underside of surfaces to assist in the cleaning and removal of built-up paint. This product is designed for cleaning vertical or hard to reach places where the RX110 can't remain in contact long enough. Like the ELRX110 EnviroKlean, do not leave painted items (guns/parts) exposed to ELRX111 for more than 20 minutes or you risk damaging the existing finish.

EnviroStain KIT

by Envirolak



KIT CONTENTS

3 gallons

BWS Envirostain Binder for Wiping Stain

1 Quart

ELTINT01 Envirostain MicroTint 01 White

8 oz

ELDYE02 Envirostain Universal Dye 02 Orange

1 gallon

BSS Envirostain Binder for Spray Stain/Pore Marking

1 Quart

ELTINT03 Envirostain MicroTint 03 Yellow

8 oz

ELDYE03 Envirostain Universal Dye 03 Yellow

1 gallon

SB100 Envirostain Base Spray Stain

1 Quart

ELTINT04 Envirostain MicroTint 04 Blue

8 oz

ELDYE04 Envirostain Universal Dye 04 Blue

1 Quart ES301

Envirostain Uniforming White Wiping Stain

1 Quart

ELTINT06 Envirostain MicroTint 06 Black

8 oz

ELDYE05 Envirostain Universal Dye 05 Brown

1 Quart ES325

Envirostain Uniforming Antique Walnut Wiping Stain

1 Quart

ELTINT08 Envirostain MicroTint 08 Red

8 oz

ELDYE06 Envirostain Universal Dye 06 Black

1 Quart ES 375

Envirostain Uniforming Walnut Wiping Stain

8 oz

ELDYE08 Envirostain Universal Dye 08 Red

8 oz

ELDYE07 Envirostain Universal Dye 07 Bordeaux

#JUSTENVIROLAKIT

Application Method

The modular nature of the Envirolak system allow you to create the perfect stain for your application, whatever it is. Combining the Envirolak Microtints, Dyes and Binders allows you to get your colour in the type of product you need.



SCAN ME



Spray & Wipe



Hand Wipe



Spray



Dipping



Roll Coat Machine



Roll by Hand



Dry Glaze



Wet Glaze



Thousands of
colour formulas
and more!

Envirolak



SCAN ME



www.envirolak.com

UNIFORMING STAIN CHART



SCAN ME

This is a clear coat on pine, birch and oak which shows the different colours in the natural wood. Below are the uniforming stains on all three species showing how even the colours are. This will help even out the natural colour variations in the wood. Many colours can be made in the uniforming stain system by starting with the ES301, ES 325 and ES375 binders combined with water and ELTINTS & ELDYES. See our NEW Stain System Guide for more details.

Uniforming Stain
WHITE WIPING



Uniforming Stain
OAK WIPING



Uniforming Stain
CHERRY WIPING



Uniforming Stain
WALNUT WIPING



Uniforming Stain
ANTUQUE WALNUT WIPING



Uniforming Stain
ROSEWOOD WIPING



Uniforming Stain
MAHOGANY WIPING



Uniforming Stain
WENGE WIPING



Uniforming Stain
NATURAL WENGE WIPING



CHC STAIN CHART

The Country Heritage Collection (CHC) stains were designed for large, high quality Amish furniture manufacturers. These stains are formulated to enhance the natural beauty of the wood. It highlights the character of different types of wood to provide contrast and pore marking while maintaining uniformity and consistency. Spray on and wipe off or wipe on and wipe off with ease as these stains have excellent open time and blending properties making it easy to achieve consistent colour and look on large or complex parts.



SCAN ME

CHC-101 S-2

On Maple

On Oak



CHC-102 FRUITWOOD

On Maple

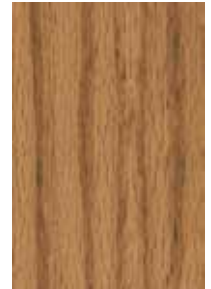
On Oak



CHC-103 MX

On Maple

On Oak



CHC-104 SEELY

On Maple

On Oak



CHC-105 BLACK WALNUT

On Maple

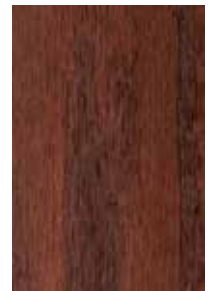
On Oak



CHC-106 ACRES

On Maple

On Oak



CHC-107 WASHINGTON

On Maple

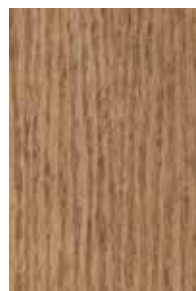
On Oak



CHC-108 S-14

On Maple

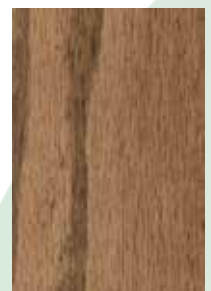
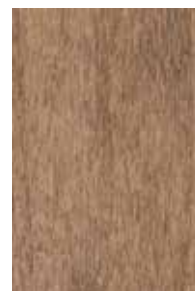
On Oak



CHC-109 S-12

On Maple

On Oak



CHC STAIN CHART

CHC-110 MEDIUM

On Maple

On Oak



CHC-111 BOSTON

On Maple

On Oak



CHC-112 PROVINCIAL

On Maple

On Oak



CHC-113 MICHAELS CHERRY

On Maple

On Oak



CHC-114 TRADITIONAL

On Maple

On Oak



CHC-116 HARVEST

On Maple

On Oak



CHC-117 ASBURY

On Maple

On Oak



CHC-118 ANTIQUE SLATE

On Maple

On Oak



CHC-119 CAPPUCCINO

On Maple

On Oak



CHC-120 HUSK

On Maple

On Oak



CHC-121 SMOKE

On Maple

On Oak



CHC-122 COCCA

On Maple

On Oak



CHC STAIN CHART

CHC-131 FROST

On Maple

On Oak



CHC-132 SAND

On Maple

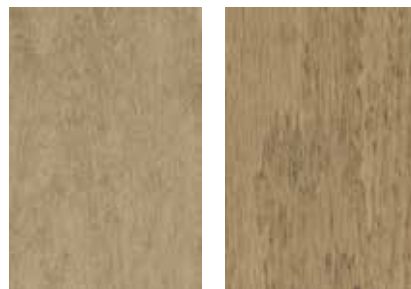
On Oak



CHC-133 TUNDRA

On Maple

On Oak



CHC-134 ARGOS

On Maple

On Oak



CHC-135 DRIFTWOOD

On Maple

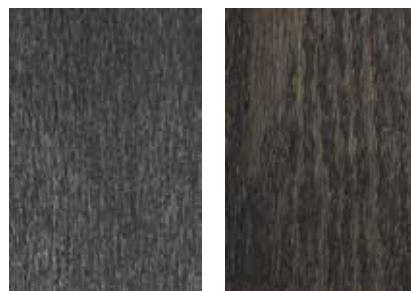
On Oak



CHC-136 GST

On Maple

On Oak



CHC-225 MISSION MAPLE

On Maple

On Oak



CHC-226 COFFEE

On Maple

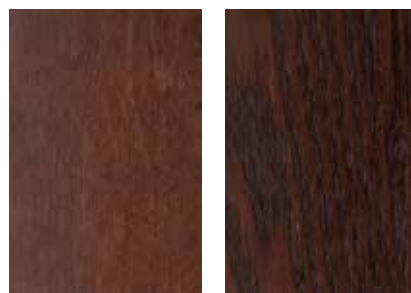
On Oak



CHC-227 RICH CHERRY

On Maple

On Oak



CHC-228 RICH TOBACCO

On Maple

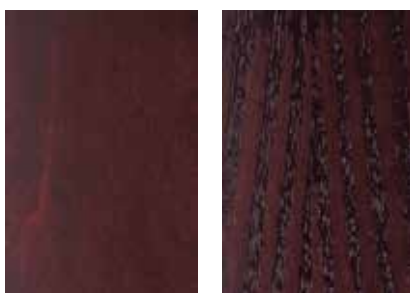
On Oak



CHC-229 BING CHERRY

On Maple

On Oak



CHC-230 ONYX

On Maple

On Oak



EURO STAIN CHART

The Euro Collection is made of popular wiping stain colours found in big box retail stores used on flooring and furniture. This collection also includes some of the most popular RAL colours from Europe.



SCAN ME

01 WHITE



02 YELLOW



03 PASTEL YELLOW



04 BLUE



PASTEL BLUE



06 BLACK



PASTEL BLACK



08 RED



PASTEL RED



WHITE



**SUPER WHITE
(SHADED)**



OAK



EURO STAIN CHART

SMOKED OAK



PINE



BOURBON



ICE BROWN



OLIVE



WALNUT



DARK OAK



STONE



GRIS BEIGE



TITANIUM GREY



MUD LIGHT



SKY GREY



BISCUIT



ANTIQUÉ BRONZE



OYSTER



EURO STAIN CHART

ASH GREY



HAVANNA



SAVANNA



SLATE GREY



SILVER GREY



CASTLE BROWN



CHERRY



MAHOGANY



CHERRY CORAL



CHOCOLATE



BLACK



CHARCOAL



RAL1013



RAL1015



RAL2003



EURO STAIN CHART

RAL3015



RAL4008



RAL5002



RAL5008



RAL5014



RAL6001



RAL6003



RAL6006



RAL6018



RAL6027



RAL7001



RAL7002



RAL7005



RAL7009



RAL7035



RAL7045



RAL9010



ORIGINAL STAIN CHART

The Country Heritage Collection (CHC) stains were designed for large, high quality Amish furniture manufacturers. These stains are formulated to enhance the natural beauty of the wood. It highlights the character of different types of wood to provide contrast and pore marking while maintaining uniformity and consistency. Spray on and wipe off or wipe on and wipe off with ease as these stains have excellent open time and blending properties making it easy to achieve consistent colour and look on large or complex parts.



SCAN ME

BROWN CHERRY



On Maple

Wiping - 10767
Spray - 13021



On Oak

Wiping - 10767
Spray - 13021



On Maple

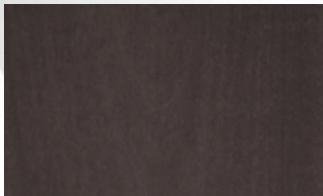
Wiping - 10769
Spray - 13013



On Oak

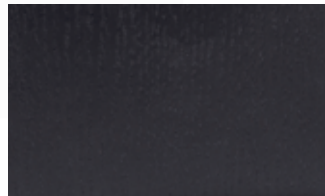
Wiping - 10769
Spray - 13013

ESPRESSO



On Maple

Wiping - 10760
Spray - 13016



On Oak

Wiping - 10760
Spray - 13016



On Maple

Wiping - 10797
Spray - 13032



On Oak

Wiping - 10797
Spray - 13032

SILVER

CHOCOLATE



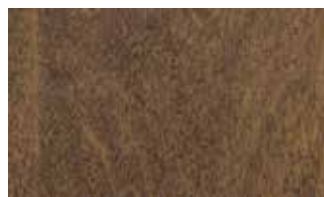
On Maple

Wiping - 10764
Spray - 12894



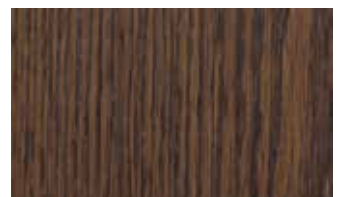
On Oak

Wiping - 10764
Spray - 12894



On Maple

Wiping - 10766
Spray - 13010



On Oak

Wiping - 10766
Spray - 13010

SMOKEY BROWN

CHARCOAL



On Maple

Wiping - 10795
Spray - 13025



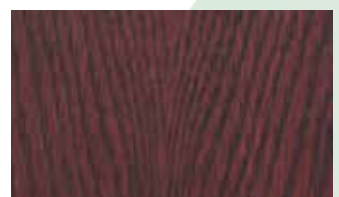
On Oak

Wiping - 10795
Spray - 13025



On Maple

Wiping - 10771
Spray - 13019



On Oak

Wiping - 10771
Spray - 13019

BORDEAUX

ORIGINAL STAIN CHART

BUTTERNUT



On Maple

Wiping - 10775
Spray - 13022



On Oak

Wiping - 10775
Spray - 13022

SAN MIGUEL



On Maple

Wiping - 10763
Spray - 13029



On Oak

Wiping - 10763
Spray - 13029

GUNSTOCK WALNUT



On Maple

Wiping - 10772
Spray - 13020



On Oak

Wiping - 10772
Spray - 13020

BURNT OAK



On Maple

Wiping - 10769
Spray - 13030



On Oak

Wiping - 10769
Spray - 13030

ROYAL MISSION



On Maple

Wiping - 10770
Spray - 13031



On Oak

Wiping - 10770
Spray - 13031

BARN BOARD



On Maple

Wiping - 10765
Spray - 13017



On Oak

Wiping - 10765
Spray - 13017

HAZELNUT



On Maple

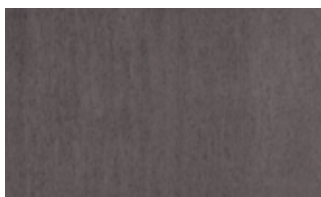
Wiping - 10762
Spray - 13012



On Oak

Wiping - 10762
Spray - 13012

ICONIC MAPLE



On Maple

Wiping - 10774
Spray - 13024



On Oak

Wiping - 10774
Spray - 13024

TAUPE



On Maple

Wiping - 10801
Spray - 13011



On Oak

Wiping - 10801
Spray - 13011

WEATHERED GREY



On Maple

Wiping - 10758
Spray - 13014



On Oak

Wiping - 10758
Spray - 13014

ORIGINAL STAIN CHART

PROVINCIAL



On Maple

Wiping - 10761
Spray - 13022



On Oak

Wiping - 10761
Spray - 13022

GOLDEN OAK



On Maple

Wiping - 10768
Spray - 13018



On Oak

Wiping - 10768
Spray - 13018

HONEY



On Maple

Wiping - 10776
Spray - 13023



On Oak

Wiping - 10776
Spray - 13023

WESTERN GREY



On Maple

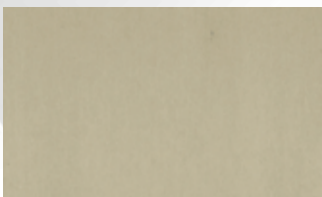
Wiping - 10800
Spray - 13027



On Oak

Wiping - 10800
Spray - 13027

BEIGE



On Maple

Wiping - 10802
Spray - 13028



On Oak

Wiping - 10802
Spray - 13028

WHITE



On Maple

Wiping - 10796
Spray - 13026



On Oak

Wiping - 10796
Spray - 13026

Cerused Finishing Collection

Refined & Repeatable – A Finish You Can Trust.

Scan Here
For More
Finishes



Cerused Finishing System #1 – 300 Series 3 Sheen

Here's how to get panel that highlights a **balanced, low-sheen finish** with subtle glaze accents:

- 1) **Sand** raw wood with 180 grit
- 2) **Apply** CM14985 Uniforming wiping stain
- 3) **Seal** with 300 03 + 10% water (1K)
- 4) **Apply** CM15307 RWO dry glaze
- 5) **Sand** back with 400 grit + maroon non-woven pad
- 6) **Final** coat: 300 03 + 10% CAT100LV + 10% water (2K)

The outcome? A controlled, consistent look with great clarity and just the right amount of glaze hold—ideal for clean, professional finishes in production settings.



Cerused Finishing System #4 – 300 Series 3 Sheen

Here's another standout finish where our specialists explore how stains, sealers, and glazes interact to achieve consistent, high-quality results. On rustic oak:

- 1) **Sand** raw wood with 180 grit
- 2) **Apply** CM14647 Antique Slate spray stain
- 3) **Seal** with 300 03 Clear + 10% water (1K)
- 4) **Apply** CM15306 Worn Khaki dry glaze
- 5) **Sand** glaze back with 400 grit + maroon non-woven pad
- 6) **Topcoat** with 300 03 Clear + 10% CAT100LV & 10% water (2K)

The final look delivers **rich contrast and subtle layering**, showing just how much impact the right glaze and base combo can make.

Warm Clear Urethane Self Seal Topcoat

EL 100 05	Envirothane 100 Warm Clear Self Seal 5 Sheen	✓
EL 100 10	Envirothane 100 Warm Clear Self Seal 10 Sheen	✓
EL 100 20	Envirothane 100 Warm Clear Self Seal 20 Sheen	✓
EL 100 30	Envirothane 100 Warm Clear Self Seal 30 Sheen	✓
EL 100 50	Envirothane 100 Warm Clear Self Seal 50 Sheen	✓
EL 100 90	Envirothane 100 Warm Clear Self Seal 90 Sheen	✓

Low-Slip Urethane Self Seal Topcoat

EL 125 05	Envirothane 125 Low-Slip Clear Self Seal 5 Sheen	✓
EL 125 30	Envirothane 125 Low-Slip Clear Self Seal 30 Sheen	✓

Primer

ELPR160-TB	Envirocyl 160-TB Universal Tannin Blocking Primer	
ELPR170	Envirothane 170 White Primer High Solids	
ELPR170-TB	Envirothane 170-TB Tannin Blocking White Primer	
ELPR180	Envirothane 180 Neutral Primer High Solids	
ELPRT9000	Envirocyl T9000 Universal Stain & Tannin Blocking Primer	

White Urethane Topcoat

ELNYW200 5	Envirothane 200 White Topcoat 5 Sheen	✓
ELNYW200 10	Envirothane 200 White Topcoat 10 Sheen	✓
ELNYW200 20	Envirothane 200 White Topcoat 20 Sheen	✓
ELNYW200 30	Envirothane 200 White Topcoat 30 Sheen	✓
ELNYW200 50	Envirothane 200 White Topcoat 50 Sheen	✓
ELNYW200 70	Envirothane 200 White Topcoat 70 Sheen	✓

Clear Urethane Topcoat

ELNYC300 03	Envirothane 300 Crystal Clear Topcoat 3 Sheen	✓
ELNYC300 05	Envirothane 300 Crystal Clear Topcoat 5 Sheen	✓
ELNYC300 10	Envirothane 300 Crystal Clear Topcoat 10 Sheen	✓
ELNYC300 20	Envirothane 300 Crystal Clear Topcoat 20 Sheen	✓
ELNYC300 30	Envirothane 300 Crystal Clear Topcoat 30 Sheen	✓
ELNYC300 50	Envirothane 300 Crystal Clear Topcoat 50 Sheen	✓
ELNYC300 90	Envirothane 300 Crystal Clear Topcoat 90 Sheen	✓

Stains

ELBWS	Envirostain Binder for Wiping Stain	
ELBSS	Envirostain Binder for Spray Stain/Pore Marking	
ELB DS	Envirostain Binder for Dip Stain	
ELB DG	Envirostain Binder for Dry Glaze	
ELBRC	Envirostain Binder for Glaze Adhesion/Roll Coat	
ES301,ES325,ES375	Envirostain Uniforming Binders for Wiping Stain	
EL DGB 100	Dry Glaze Base	
ELSWB 104	Wipe Stain Base	
ELSSB 100	Spray Stain Base	
ELSE	Stain Extender	

Catalysts & Additives

ELCAT 100-LV	Low Viscosity Hardener	
ELCAT 150	Crosslinker	
ELADD 001	WB Thickener	
ELADD 002	WB Flow Additive	
ELADD 003	UV Absorber	
ELADD 004	Tannin Blocking Additive	
ELADD 005	WB Defoamer Solution	
ELADD 006	WB Fish-eye Eliminator	

Reducers and Cleaners

ELRX 010	WB Reducer	
ELRX 110	EnviroKlean All-Purpose WB Cleaner	
ELRX 110-C	EnviroKlean Concentrate	
ELRX 111	EnviroKlean No Drip Cleaner	
ELRX 114	WB Retarder	

White Acrylic Topcoat

ELACW400 10	Envirocyl 400 White Topcoat 10 Sheen	✓
ELACW400 20	Envirocyl 400 White Topcoat 20 Sheen	✓
ELACW400 30	Envirocyl 400 White Topcoat 30 Sheen	✓
ELACW450 10	Envirocyl 450 White Topcoat 10 Sheen	✓
ELACW450 20	Envirocyl 450 White Topcoat 20 Sheen	✓
ELACW450 30	Envirocyl 450 White Topcoat 30 Sheen	✓

Clear Acrylic Sealer

ELSEAL500	Envirocyl 500 Crystal Clear Sealer	
------------------	------------------------------------	--

Clear Acrylic Urethane Self Seal Topcoat

ELAC500 03	Envirocyl 500 Crystal Clear Topcoat 03 Sheen	✓
ELAC500 10	Envirocyl 500 Crystal Clear Topcoat 10 Sheen	✓
ELAC500 20	Envirocyl 500 Crystal Clear Topcoat 20 Sheen	✓
ELAC500 30	Envirocyl 500 Crystal Clear Topcoat 30 Sheen	✓
ELAC500 90	Envirocyl 500 Crystal Clear Topcoat 90 Sheen	✓

Dark Acrylic Urethane Tint Base

ELAN510 10	Envirocyl 510 Dark Tint Base Topcoat 10 Sheen	✓
ELAN510 20	Envirocyl 510 Dark Tint Base Topcoat 20 Sheen	✓
ELAN510 30	Envirocyl 510 Dark Tint Base Topcoat 30 Sheen	✓

Clear UV Topcoat

ELUV700 05	Envirocure 700 Clear Top Coat 05 Sheen	✓
ELUV700 10	Envirocure 700 Clear Top Coat 10 Sheen	✓
ELUV700 20	Envirocure 700 Clear Top Coat 20 Sheen	✓
ELUV700 30	Envirocure 700 Clear Top Coat 30 Sheen	✓
ELUV700 90	Envirocure 700 Clear Top Coat 90 Sheen	✓

White Acrylic Urethane Hybrid Topcoat

ELNYW800 20	Envirothane 800 White Top Coat 20 Sheen	✓
ELNYW800 30	Envirothane 800 White Top Coat 30 Sheen	✓
ELNYW800 50	Envirothane 800 White Top Coat 50 Sheen	✓

Crystal Clear Urethane Topcoat

ELNYC900 00	Envirothane 900 Raw Natural Look 0 Sheen	✓
--------------------	--	---

Toners

COA PMCM12841	EnviroTone Espresso	
COA PMCM12842	EnviroTone Gunstock Walnut	
COA PMCM12843	EnviroTone Bordeaux	
COA PMCM12844	EnviroTone Weathered Grey	
COA PMCM12845	EnviroTone Golden Oak	

Dyes

ELDYE02	Envirostain Universal Dye 02 Orange	
ELDYE03	Envirostain Universal Dye 03 Yellow	
ELDYE04	Envirostain Universal Dye 04 Blue	
ELDYE05	Envirostain Universal Dye 05 Brown	
ELDYE06	Envirostain Universal Dye 06 Black	
ELDYE07	Envirostain Universal Dye 07 Bordeaux	
ELDYE08	Envirostain Universal Dye 08 Red	

Pigments

ELTINT01	Envirostain MicroTint 01 White	
ELTINT03	Envirostain MicroTint 03 Yellow	
ELTINT04	Envirostain MicroTint 04 Blue	
ELTINT06	Envirostain MicroTint 06 Black	
ELTINT08	Envirostain MicroTint 08 Red	
ELTINTGE	Envirostain Gilsonite Effect	
COA NX8960001	Colourant Titanium White Chroma-Chem WB NX896-0001	
COA NX8960401	Colourant Quinacridone Red Chroma-Chem WB NX896-0401	
COA NX8960901	Colourant Lead Free Orange Chroma-Chem WB NX896-0901	
COA NX8961001	Colourant Red Iron Oxide Chroma-Chem WB NX896-1001	
COA NX8961301	Colourant Burnt Umber Chroma-Chem WB NX896-1301	
COA NX8961801	Colourant Yellow Iron Oxide Chroma-Chem WB NX896-1801	
COA NX8962555	Colourant Medium Yellow Chroma-Chem WB NX896-2555	
COA NX8962601	Colourant Organic Yellow G.S. Chroma-Chem WB NX896-2601	
COA NX8965501	Colourant Phtalo Green Chroma-Chem WB NX896-5501	
COA NX8967201	Colourant Phtalo Blue Chroma-Chem WB NX896-7201	
COA NX8969401	Colourant Quinacridone Violet Chroma-Chem WB NX896-9401	
COA NX8969901	Colourant Lamp Black Chroma-Chem WB NX896-9901	
T9000BT	Colourant Black PRT9000 Black Tinter	

Water Based Wood Coatings

The team behind Envirolak has been in the wood finishing industry collectively for over 100 years.



Vimeo
VIDEO LIBRARY



Find a
DEALER



E-Brochure
BROCHURE

Envirolak



4530 Eastgate Parkway
Mississauga, ON, L4W 3W6
Canada



(905) 629-7007
1 800 239 3824
www.envirolak.com

 Envirolak Coatings

 Envirolak

 **Performance**
Finishing Solutions

4800 Eastgate Parkway, Units 3 & 4
Mississauga, ON L4W 3W6
Canada